



New Build Townhouses with Sea Views in
Portman Murcia

+34 966 932 436

+34 622 222 939

Ramon Gallud, 171, Torrevieja 03182

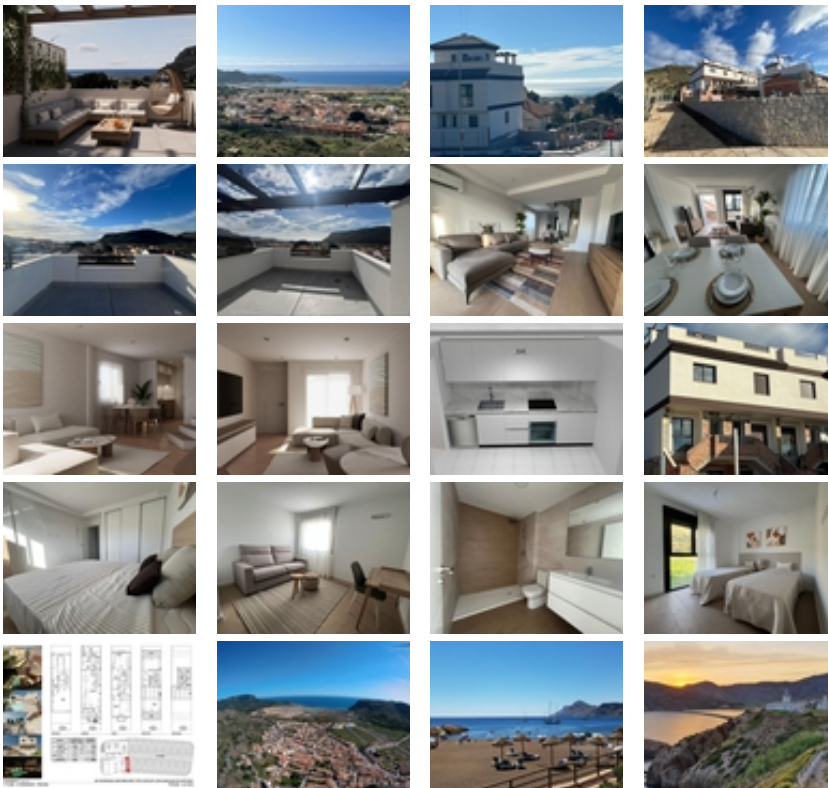
<http://ns2.talmarproperty.com/>



Ref. N:N9597/7515

€ 198 000

- Bedrooms: 2
- Bathrooms : 1
- S: 143m²
- Design and Interior
 - built-in wardrobes
- Layout and decoration
 - Basement
 - Storage room
- Territory
 - Community Garden
 - Public swimming pool
- Views
 - View to sea
- Distance
 - Beach:1.6 km. m.



New Build Townhouses with Sea Views in Portman Murcia~~Exclusive Residential Living in Portman Bay~This exclusive development of 39

newly built townhouses is located in an elevated position in Portman, offering panoramic views over the Mediterranean and the beautiful Portman Bay. Just 1.6 km from the beach, these homes are designed to embrace the authentic Mediterranean lifestyle in a peaceful and privileged natural setting.~~Portman is a charming coastal town surrounded by protective mountains and open to the sea, enjoying a south facing orientation and mild temperatures throughout the year. The area is ideal for outdoor enthusiasts, with hiking and mountain biking routes, crystal clear waters for swimming and a relaxed atmosphere perfect for disconnecting. At the same time, it is only 15 minutes by car from Cartagena, where you will find shopping centers, hospitals, cultural attractions and a vibrant marina.~~Modern 2 and 3 Bedroom Townhouses with Private Solarium~The development offers 2 and 3 bedroom townhouses with 1 full bathroom and 1 guest toilet, distributed over 3 or 4 floors plus a private rooftop solarium. Each property has been thoughtfully designed to maximize comfort, functionality and natural light.~~From your private solarium, you can enjoy 360 degree views of the sea and surrounding landscape, creating a unique space for relaxing, sunbathing or entertaining.~~High Quality Specifications and Practical Spaces~These new build homes are delivered with high quality materials and modern finishes, including:~~Modern kitchens equipped with top brand appliances~Armored entrance door~Bathrooms with vanity units, mirrors, shower screens and electric towel heaters~Aerothermal system for hot water~Pre installation for split air conditioning units~Spacious private underground garage and storage area~~Large storage areas provide ideal space for bicycles, beach equipment or diving gear, making these homes perfect for those who enjoy the many outdoor activities available in the region.~~Communal Areas for Relaxation and Social Living~The residential complex features landscaped gardens and a communal swimming pool, offering residents a comfortable and secure environment to relax and enjoy time with family and friends.~~Distances to Key Points of Interest~Beach 1.6 km~Cartagena 15 km~La Manga Club Golf 12 km~Port of Cartagena 15 km~Murcia International Airport 35 km~Alicante Airport 120 km~~Discover Your Mediterranean Lifestyle in Portman~Whether you are looking for a permanent residence or a holiday home by the sea, these townhouses in Portman offer views, comfort and an exceptional natural environment. Contact us today to receive more information or to arrange a visit to this outstanding new development.~