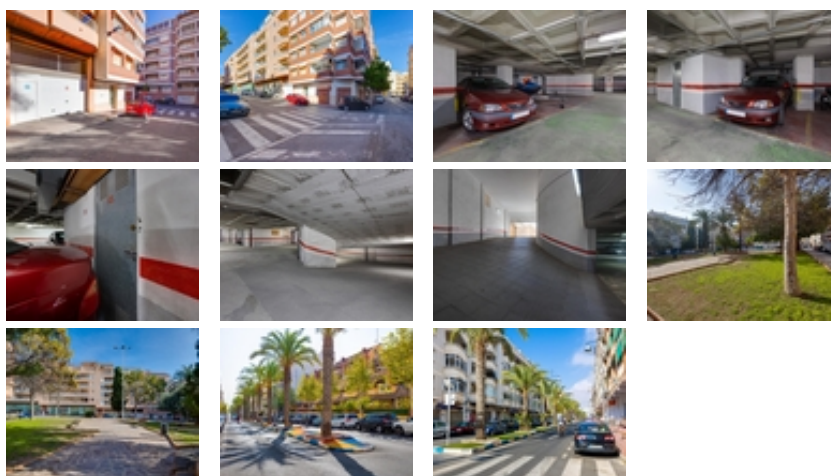




Ref. N:G126JR/1142

€ 11 500

- S: 15m²
- Layout and decoration
 - Storage room
- Distance
 - Beach:250 m. m.



Discover this excellent opportunity that combines practicality and comfort. We present a garage parking space located on basement level -1, with easy access via ramp, ensuring that parking your vehicle is quick and hassle-free. In addition, it includes an adjoining storage room, perfect for storing extra belongings or sports equipment—an ideal solution for those looking to maximize their space!~The location is unbeatable, close to local shops and essential services, giving you constant peace of mind knowing your car is protected while you enjoy the urban buzz. Don't miss the chance to secure this valuable asset where every square meter counts. Contact us now for more information!~~THE PRICE DOES NOT INCLUDE TAXES OR

ADDITIONAL EXPENSES.~